

Build the world
you want to play in
 by collecting all of the Roominate® kits!

The creative wired building kit™
roominate®
 Switch on Your Imagination™

Cozy Corner
Café

Instructions + Ideas!



Motor
 adds
 playful
 motion!



Zoey's Pet Vet Van



Sophie's Ice Cream Cart



Emma's Townhouse



Cotton Candy Carnival



Alice's Mansion

Want to be famous?
 Email a photo of your creation to mydesign@roominatetoy.com or tweet @roominate and we'll post it on our website!

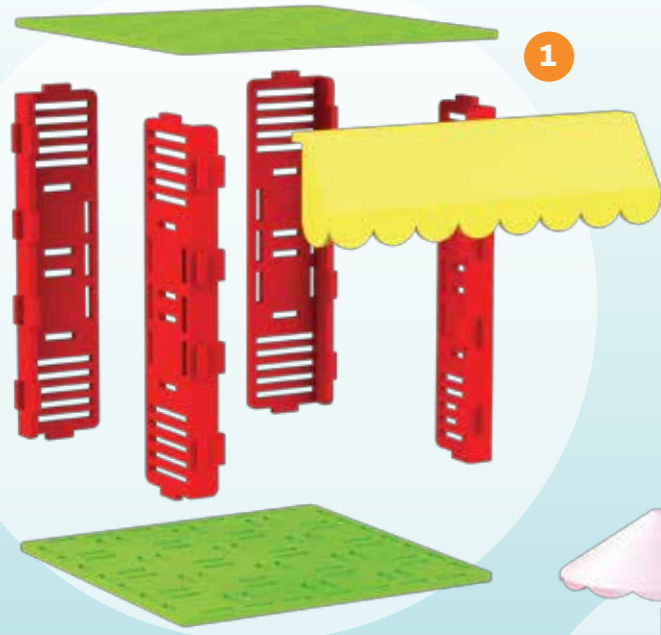
Instructions + Ideas!
 See more at roominatetoy.com

This device complies with Part 15 of the FCC Rules. Operation is subject to the following two conditions: (1) this device may not cause harmful interference, and (2) this device must accept any interference received, including interference that may cause undesired operation.
 NOTE: This equipment has been tested and found to comply with the limits for a Class B digital device, pursuant to Part 15 of the FCC Rules. These limits are designed to provide reasonable protection against harmful interference in a residential installation. This equipment generates, uses and can radiate radio frequency energy and, if not installed and used in accordance with the instructions, may cause harmful interference to radio communications. However, there is no guarantee that interference will not occur in a particular installation. If this equipment does cause harmful interference to radio or television reception, which can be determined by turning the equipment off and on, the user is encouraged to try to correct the interference by one or more of the following measures: — Reorient or relocate the receiving antenna. — Increase the separation between the equipment and receiver. — Connect the equipment into an outlet on a circuit different from that to which the receiver is connected. — Consult the dealer or an experienced radio/TV technician for help.
 Please note that changes or modifications not expressly approved by the party responsible for compliance could void the user's authority to operate the equipment.



Alice and Bettina became friends in their university's master's engineering program, and soon discovered that they were both inspired to pursue engineering by childhood toys. To help inspire the next generation of innovators, Alice and Bettina designed Roominate®!

BUILD the Café, table and chair!



1



2



1



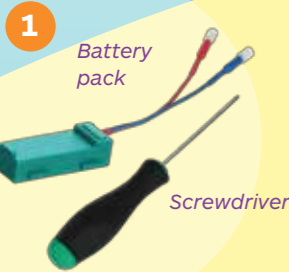
2

IMPORTANT BATTERY SAFETY INFORMATION
 In exceptional circumstances, batteries may leak fluids that can cause a chemical burn injury or ruin your product. To avoid battery leakage:

- Adult supervision is recommended when changing batteries.
- Non-rechargeable batteries are not to be recharged.
- Rechargeable batteries are to be removed from the toy before being charged.
- Rechargeable batteries are only to be charged under adult supervision.
- Do not mix alkaline, standard (carbon-zinc), or rechargeable (nickel-cadmium) batteries.
- Do not mix old and new batteries.
- Only batteries of the same or equivalent type as recommended are to be used.
- Batteries are to be inserted with the correct polarity.
- Exhausted batteries are to be removed from the toy.
- The supply terminals are not to be short-circuited.
- Dispose of battery(ies) safely.
- Batteries may explode or leak if disposed of in a fire.
- The toy is not to be connected to more than the recommended number of power supplies.

WIRE

Use your motor to **WIRE** a fan
 (You'll need 2 AAA batteries).



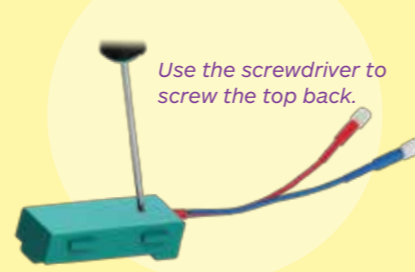
1



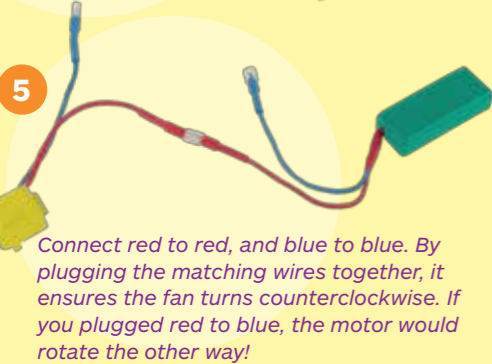
2



3



4



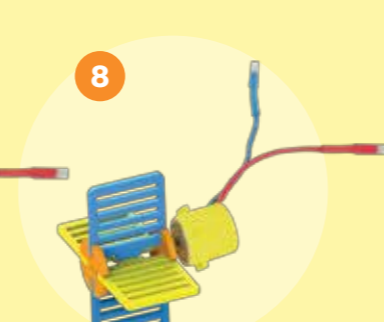
5



6



7



8

Do not aim at eyes or face.

Battery pack
 Screwdriver

Use the screwdriver to unscrew the top off of the battery pack

Match + on the batteries to + on the battery pack and put inside.

Use the screwdriver to screw the top back.

Connect red to red, and blue to blue. By plugging the matching wires together, it ensures the fan turns counterclockwise. If you plugged red to blue, the motor would rotate the other way!



Hi there! I'm Bettina and I love working in my café. Are you ready to design an awesome one for me?

ABOUT BETTINA

Favorite Activities: Making ice cream, programming games on my laptop, and playing with Alice and her dog Harrie at the park!

Favorite Foods: Pasta and pie!

Favorite Project: Engineering my own computer!

Favorite Scientist: Grace Hopper

Fun Fact: I love making jewelry using my soldering iron!

I Want to Be: An electrical engineer so that I can design medical devices, toys and automatic pasta maker. Oh, and rocket ships, too!



Connect your circuits to rPower* to control them remotely from a smartphone or tablet!

*Sold separately.



My name is Emma, and I'm ready to build and play at the café!

ABOUT EMMA

Favorite Activities: Camping and rock climbing

Favorite Foods: S'mores and corn on the cob

Favorite Project: I built my own microscope!

Favorite Scientist: Barbara McClintock

Fun Fact: I love the color pink because it's so bright and cheery!

I Want to Be: A biologist so that I can discover ways to cure genetic diseases and use forensics to help solve crimes!

Actual color of pieces in your set may be different from those shown here. Also, there's more than one way to build your Café; we've just shown you one way here, but you can get creative and try your own way!

Collect all of the dolls, pets and Roominate® kits!

