



# Fairy Light Garden

My Fairy  
Garden® Leaflet

Plants and growth may vary.





# About My Fairy Garden®

Did you know that fairies are everywhere? They are! Not everyone can see them, but for those of us who can, they're a magical sight! Fairies love nature, so you'll usually find them near flowers, tree and toadstools, or among other wild and beautiful plants. You can invite fairies into your home by creating magical gardens...it's true! They will quickly become your friends when you give them a lovely home and help them care for it!

This set includes everything you'll need to make a special garden for the fairy Saffron and her beautiful unicorn! Saffron spends much of her time daydreaming in her garden, petting and chatting with her unicorn, Calista. Saffron especially enjoys her garden at nighttime when it's calm and peaceful, so she blows on her mushroom home to activate magical light and music to relax in the evening!

Once you build Saffron's garden and start growing your plants, you can have fun playing in your new fairy world!

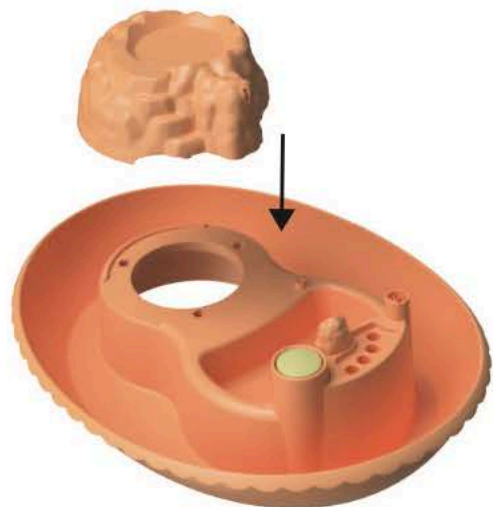
**Contents:** Fairy Light House, Bridge, Water Wheel, Watering Can, 4 Gardening Tools, Seed Packet, Fairy Seed Starter, Saffron the Fairy, Calista the Unicorn, Fairy Flying Cord



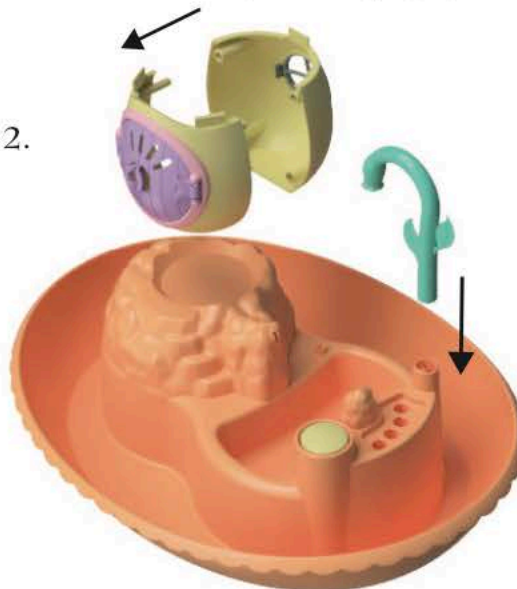
# Assembling Your Fairy Garden

Assemble your garden and add 2 AAA batteries to the house (see last page).

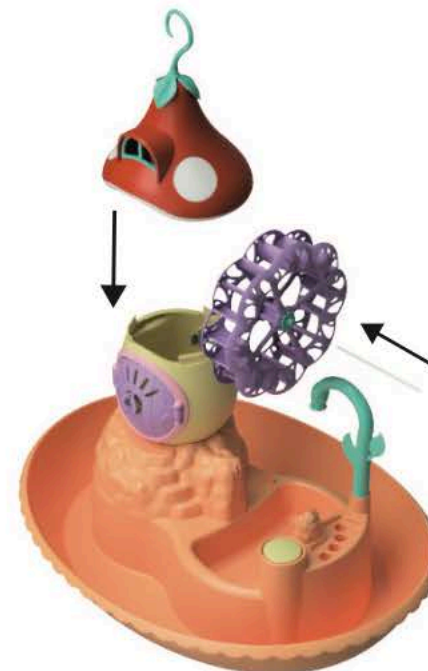
1.



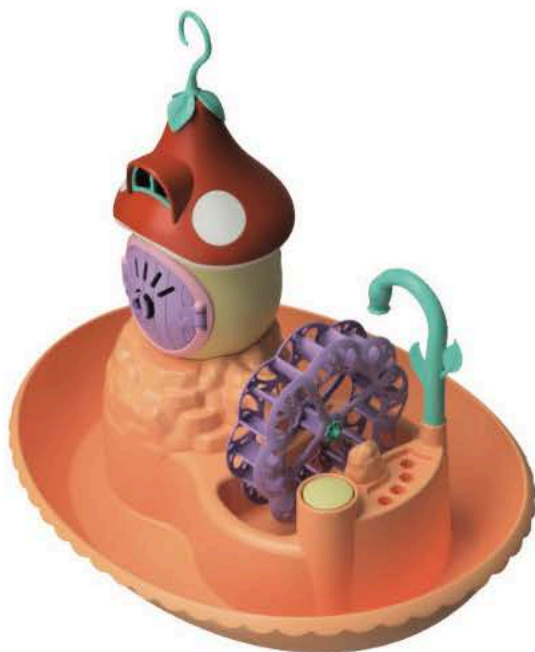
2.



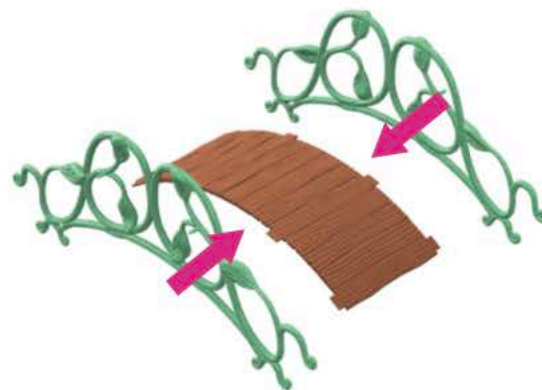
3.



4.



5.



6.



# Creating and Caring For Your Fairy Garden

---

Once you have assembled your Light Garden, add the Fairy Seed Starter to the area(s) you where you wish to grow your garden.

**Tip:** You may want to mix your own soil with the Fairy Seed Starter to add nutrients to your garden and improve growing results.

Add water to the Fairy Seed Starter—enough that it is moist but not leaving any water sitting at the bottom. The Fairy Seed Starter will get darker to show that it is wet.

Evenly scatter seeds on all of the Fairy Seed Starter areas. Sprinkle them evenly about  $\frac{1}{8}$  to  $\frac{1}{4}$ " apart. Using your gardening tool, gently press the seeds down, and then sprinkle a little more Fairy Seed Starter over the seeds. Sprinkle or spray water on the Fairy Seed Starter.

**Tip:** Planting seeds too close together will cause them to crowd each other out.

## What is Fairy Seed Starter?

It looks magical, but it's actually vermiculite, a micro rock mined from the ground. It's an ideal environment for seeds to sprout because it holds a lot of water while still remaining airy.

Check the dampness of your Fairy Seed Starter each day to make sure it does not dry out. Add water as needed.

To water your garden, you can use the watering can!

**Tip:** For quicker germination, a plastic bag can be placed over the entire set to hold moisture in.

**Tip:** If you overwater, ask an adult to gently tip it and pour water out, or soak it up with a paper towel.

Put your fairy garden near a window that gets Western or Southern sun, and rotate your garden daily.

**Tip:** Place your fairy garden on a sturdy surface so it won't fall or get knocked over!

Depending on the temperature and location, the seeds will take about three to seven days to start growing. Your seed mix contains three types of plants, and they all grow differently and at different rates. First you will see sprouts come up through the soil, and then you will start seeing some leaves!

**Tip:** Once your plants have begun growing, you may want to transplant your garden by switching out the Fairy Seed Starter with your own soil, to continue nurturing and growing your plants. Ask an adult for help! You can also replant using your own favorite seeds or flowers!

## Make it Your Own

---

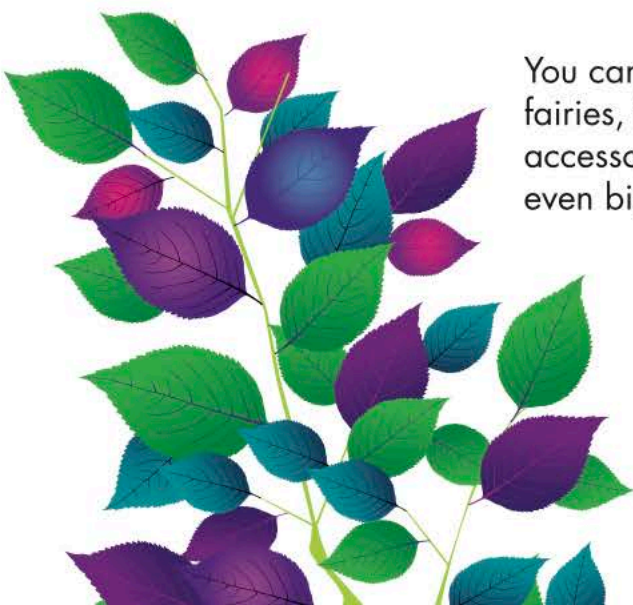
Add any decorations or accessories you want! Fairies like rocks, pebbles, flowers, twigs, shells, etc. Want to add some other flowers or plants? You can do that, too! We've given you enough to get started, but go ahead and make it special!

## Play!

---

If you blow air on the house, it magically lights up and starts playing music! To turn it off, simply blow on it again! As your garden grows, you get to have fun playing with Saffron and Calista! You can use the stand to help Saffron stay on her own, or attach the magical flying cord to Saffron's back and to the garden base and make her look like she's flying!

You can collect other fairies, friends and accessories for even bigger fun!



## How Do Fairy Gardens Grow?

After following the guide, you know how to plant and water the seeds, but how do your plants and flowers really grow? They absorb what they need from water, air and sunlight! Making sure seeds are hydrated and allowing them time in sun is the way you care for plants, because they're living things, too! Water is the most important thing during germination. Germination is the growth and development of a seed into a plant. Once you have a sprout (the beginning growth of a plant, like a little shoot or stem), sunlight and air become important, too!

## What Do Fairy Gardens Need to Grow?

Plants use water, sunlight and carbon dioxide from the air to make their food, and this is called photosynthesis ("photo" means light, and "synthesis" means putting together):

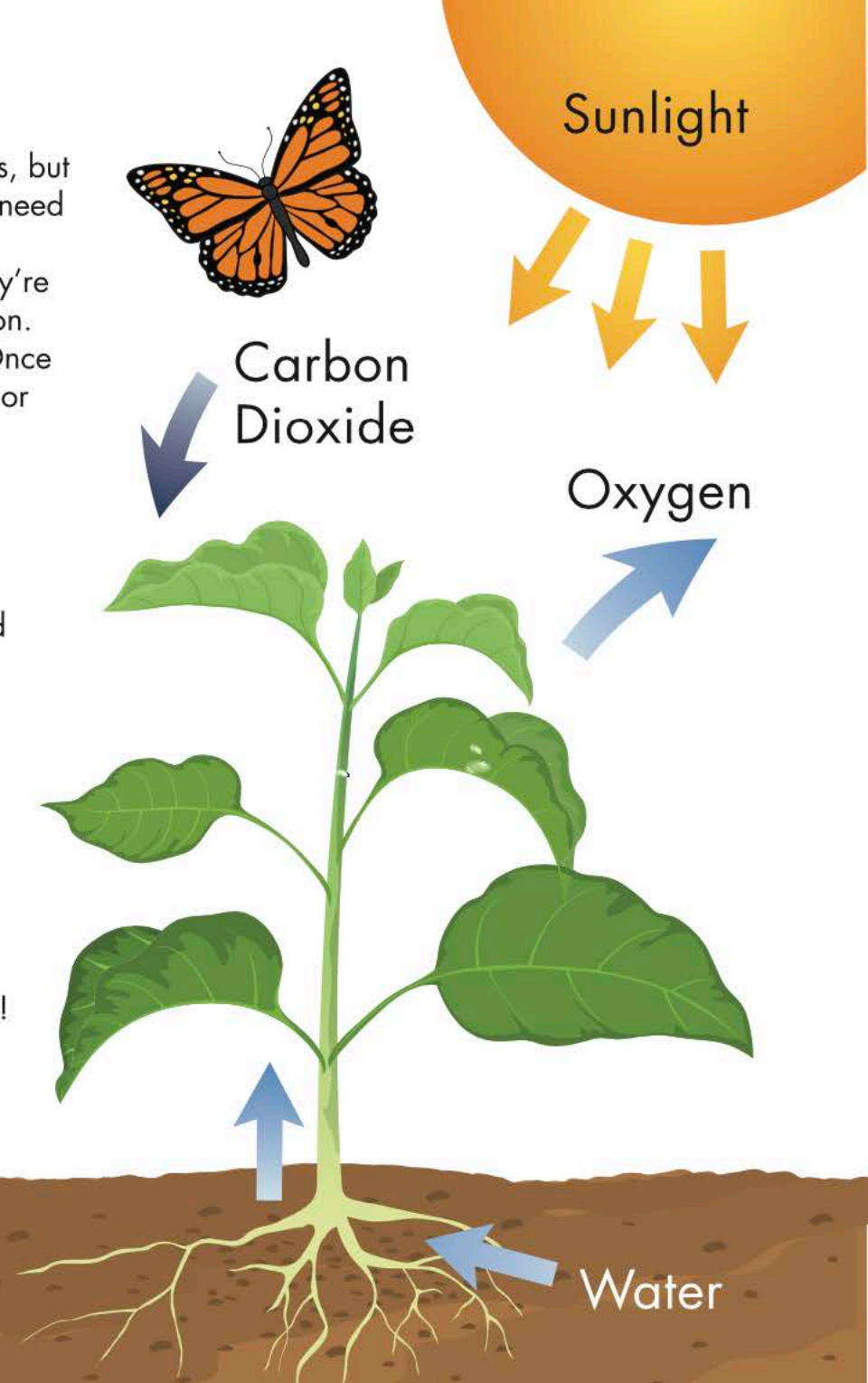
1. The green of the plant's leaves (chlorophyll) absorbs the sun's energy.
2. The energy is used to split water molecules into hydrogen and oxygen.
3. Oxygen is released into the atmosphere (this is what we breathe!).
4. The carbon dioxide from the air, plus the hydrogen, is used to form food to feed the plant!

So, by watering your garden and making sure it gets sunlight, you are feeding your plants and giving them what they need to grow!

### Develops Important **STEM** Skills



SCIENCE, TECHNOLOGY, ENGINEERING, MATH



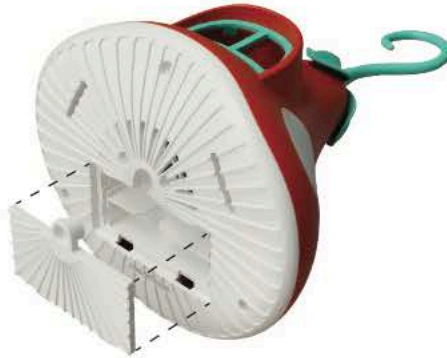
# Battery Information

---

## BATTERY INSTALLATION

Alkaline batteries are recommended for best performance. Remove the battery cover as shown, using a screwdriver and insert two AAA batteries. Then screw the battery cover back on.

Note: The Fairy Light product will not function if the batteries are inserted incorrectly.



## BATTERY SAFETY INFORMATION

In exceptional circumstances, batteries may leak fluids that can cause a chemical burn injury or ruin your product. To avoid battery leakage:

- Adult supervision is recommended when changing batteries.
- Non-rechargeable batteries are not to be recharged.
- Rechargeable batteries are to be removed from the toy before being charged.
- Rechargeable batteries are only to be charged under adult supervision.
- Do not mix alkaline, standard (carbon-zinc), or rechargeable batteries.
- Do not mix old and new batteries.
- Only batteries of the same or equivalent type as recommended are to be used.
- Batteries are to be inserted with the correct polarity.
- Exhausted batteries are to be removed from the toy.
- The supply terminals are not to be short-circuited.
- Dispose of batteries safely.
- Batteries may explode or leak if disposed of in a fire.
- Remove batteries from product if it will not be used for a month or longer.
- Follow applicable laws and local regulations for the disposal and transportation of batteries.

This device complies with Part 15 of the FCC Rules. Operation is subject to the following two conditions: (1) this device may not cause harmful interference, and (2) this device must accept any interference received, including interference that may cause undesired operation.

NOTE: This equipment has been tested and found to comply with the limits for a Class B digital device, pursuant to Part 15 of the FCC Rules. These limits are designed to provide reasonable protection against harmful interference in a residential installation. This equipment generates, uses and can radiate radio frequency energy and, if not installed and used in accordance with the instructions, may cause harmful interference to radio communications. However, there is no guarantee that interference will not occur in a particular installation. If this equipment does cause harmful interference to radio or television reception, which can be determined by turning the equipment off and on, the user is encouraged to try to correct the interference by one or more of the following measures:

- Reorient or relocate the receiving antenna.
- Increase the separation between the equipment and receiver.
- Connect the equipment into an outlet on a circuit different from that to which the receiver is connected.
- Consult the dealer or an experienced radio/TV technician for help.

Please note that changes or modifications not expressly approved by the party responsible for compliance could void the user's authority to operate the equipment.

Keep these instructions for future reference as they contain important information.

# What's in the Seed Packet?

Ryegrass (*Lolium arundinaceum*)

Mustard (*Brassica hirta/Sinapis alba*)

Pea Seeds (*Pisum sativum*)

**Warning:** Water may leak from playset. Do not play or set on a surface that could be damaged by water.

Do you have an awesome garden playset? We want to see! Post on Instagram with #PlayMonster, or send us pictures or video: Customer Service

1400 E. Inman Pkwy.

Beloit WI, 53511

playmonster@playmonster.com

1-800-524-4263

## WARNING:

CHOKING HAZARD-Small parts.  
Not for children under 3 years.

For more fairy fun, visit  
[playmonster.com](http://playmonster.com)

**PLAYMONSTER**



If you have questions, please contact us.  
800-524-4263 • Weekdays 8am to 5pm CST

Copyright © 2020 PlayMonster LLC, 1400 E. Inman Pkwy., Beloit, WI 53511 USA. Made in China. All rights reserved. My Fairy Garden is a trademark of PlayMonster LLC. Parts and colors may vary from those shown.



You can collect other fairies, friends and accessories for even bigger fun!

